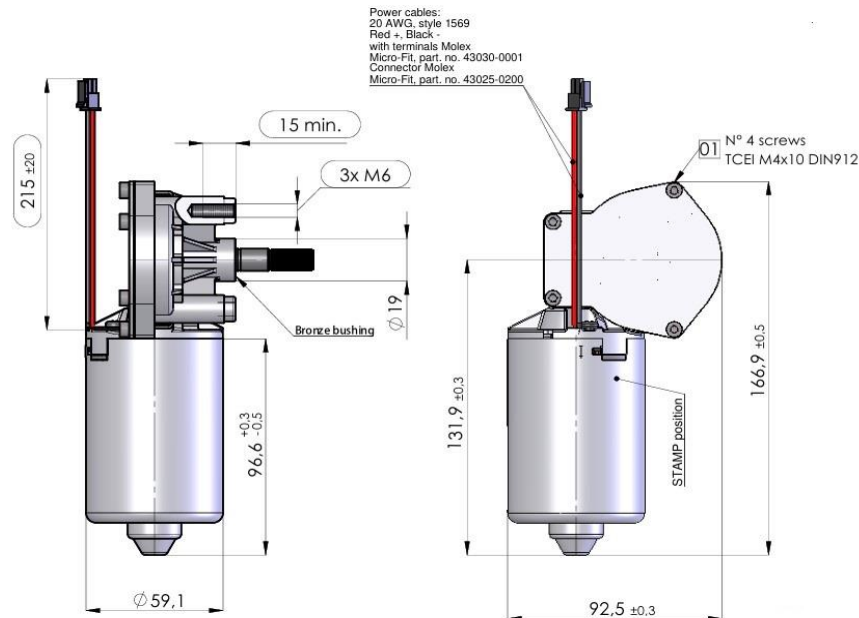
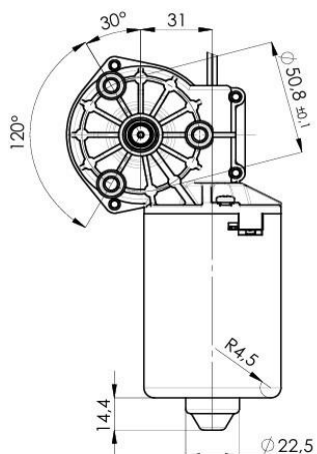
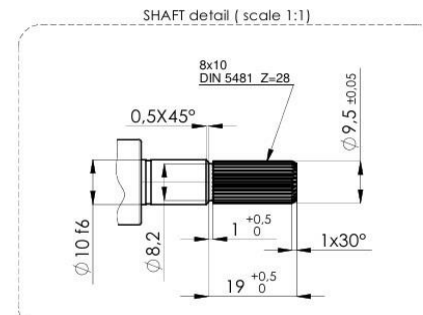


CLOCKWISE
with positive tension
on Red cable



Power cables:
20 AWG, style 1569
Red + Black
with terminals Molex
Micro-Fit, part. no. 43030-0001
Connector Molex
Micro-Fit, part. no. 43025-0200



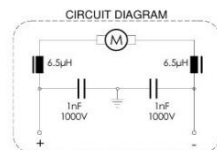
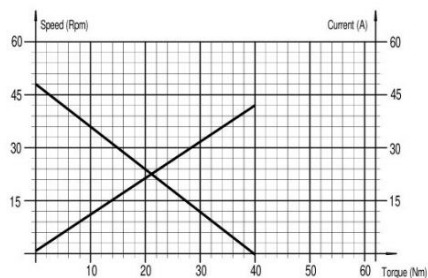
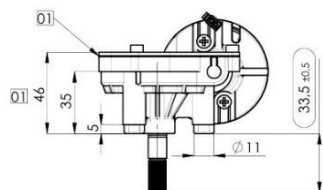
LifeTest

Definition:

1	Test Voltage:	24V
2	Number of Cycles:	35.000
3	Cycle Definition:	Open 40 sec. CCW, Break 60 sec. Close 20 sec. CW, Break 60 sec.
4	Test Load:	Open 8 Nm Close 5 Nm
5	Test Temperature:	RT

Self Locking after Life Test:

Dynamic Self Locking:	CW min 11 Nm	CW min 15 Nm with short circuit
	CCW min 4 Nm	CCW min 5.5 Nm with short circuit
Static Self Locking:	CW min 20 Nm	CW min 20 Nm with short circuit
	CCW min 20 Nm	CCW min 20 Nm with short circuit



EISSES
Aandrijftechniek

* Tolerance for no-load speed +/-2rpm maximum between LH EAT 404355 and RH EAT 404354 motors within a batch, measured within 5 seconds

EAT 404355 24V *50 rpm 6Nm 1:67
Max torque/starting torque 40Nm

These are average values when the motor is cold.

Divergences of +/-10% are possible in series

Added seal to gearbox and replaced body screws

M4x10TC DIN7985 ZB

gen tol.: ISO 22768-mk